



MANCHESTER
CITY COUNCIL

Neighbourhood Apartments for Health and Social Care needs

Property Catalogue



Manchester Health & Care
Commissioning

A partnership between
Manchester City Council
and NHS Manchester CCG



Manchester Local
Care Organisation

manchester.gov.uk

Contents

North

Harry Pigott Court 5
Sheltered Housing (55+)

Whitebeck Court 6–7
Extra Care Housing (60+)

Hudson Court 8–9
Sheltered Housing (55+)

The Byrons 10
Sheltered Housing (55+)

Cartmel Court 11
Sheltered Housing (55+)

Apprentice Court 12
Sheltered Housing (55+)

Clifford Hilditch Court 13
Sheltered Housing (55+)

Duxford Lodge 14
Sheltered Housing (55+)

Butler Court 15
Sheltered Housing (55+)

Victoria Court 16
Sheltered Housing (55+)

Central

Hibiscus Court	17
Extra Care Housing (55+)	
Tangmere Court	18
Sheltered Housing (55+)	

South

Le Bas House	19
Sheltered Housing (55+)	
Arden Court	20
Sheltered Housing (55+)	
Rowan Court	21
Sheltered Housing (55+)	
Westfields	22
Extra Care Housing (55+)	
Village 135	23–24
Extra Care Housing (55+)	

Use of Neighbourhood Apartments

Neighbourhood Apartments (formerly known as Transitional Flats) are intended for older people so they can benefit from a short stay due to a variety of reasons. An eligible older person could:

- be leaving hospital and unable to return home
- be homeless, with additional care and support needs
- need more suitable property for a short period of time, eg. have mobility difficulties and be waiting for major adaptations
- have health, care and support requirements and need to move to an environment where 24-hour access to care and support is available.

Neighbourhood Apartments are not suitable as a long-term placement for a person, regardless of care and support needs. The maximum stay is eight weeks, unless the duration of the placement is agreed with the Neighbourhood Apartment Co-ordinator.

An application for a Neighbourhood Apartment referral can only be made by a health or social care professional, eg. District Nurse, GP, Hospital Social Worker, Community Social Worker, or Primary Assessment Officer. All documentation must be completed, eg. a Referral pro forma and a Scoring Tool. These provide the Neighbourhood Apartment Co-ordinator with the necessary information about the individual's circumstances and health, care and support needs, as well as an indicative needs score, which may be used where demand exceeds supply.

All cases must have a forward exit plan, eg. a next destination: home, rehousing, residential care etc.

All apartments are strictly non-smoking, no pets are allowed (social care professionals may need to arrange kennelling where eligibility criteria are met) and family, friends and carers are not entitled to use the facilities, eg. sleepover. Citizens who are being nominated for a stay in a Neighbourhood Apartment will be expected to sign a short agreement that covers the expectations and conduct of living in both the apartment and the overall Sheltered Housing/Extra Care Scheme. If any citizen staying in an apartment breaches these rules, the keyworker will be expected to find alternative accommodation and move the person quickly. Obviously, there will be a full discussion to assess the situation and agree a way forward on a case by-case basis.

There is no charge for staying in a Neighbourhood Apartment. The only costs will be food, beverages and personal items. Where the person moving in has no family or friends to collect initial shopping, this would then be the responsibility of the Keyworker/Referrer.

All referrals need to be sent to:

Kate Kay

Neighbourhood Apartment Co-ordinator,
Adult Social Care
Tel: 0161 219 2087
Mobile: 07773537458
Email: kate.kay@manchester.gov.uk

Eileen Reynolds

Neighbourhood Apartment Co-ordinator,
Adult Social Care
Tel: 0161 219 2687
Mobile: 07970378994
Email: e.reynolds@manchester.gov.uk



Harry Pigott Court Blackley

One-bedroom apartment

Scheme type: Sheltered scheme with Northwards

Age restriction: 55+

Onsite emergency support: Pull-cord technology connects to Control Centre for emergency help, but no onsite care team

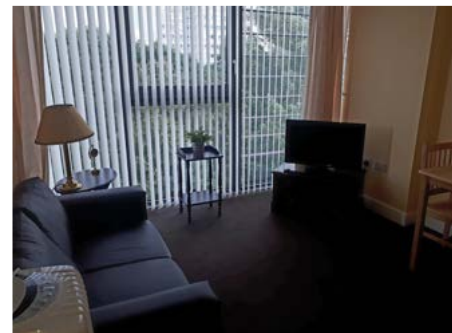
Facilities for disabled person: Bathroom with walk-in shower: wheelchair-accessible

Scheme manager: Suzanne Corcoran

Location: Flat 16, Plant Hill Road, Blackley, M9 6WQ

Features of property:

- First floor
- Fully furnished: living room furniture and TV
- Kitchen with cooking facilities
- Bathroom with walk-in shower
- Single bed and bed linen
- Key safe and spare keys available.



Whitebeck Court Blackley

One-bedroom apartment

Scheme type: Extra Care scheme with Northwards

Age restriction: 60+

Onsite emergency support: Pull-cord technology connects to Control Centre for emergency help. Care team onsite 24/7

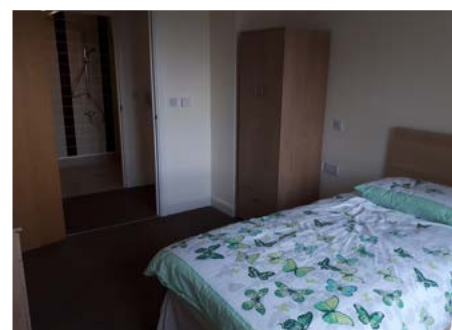
Facilities for disabled person: Fully adapted bathroom, doors and lift access to all floors

Scheme managers: Gill Simpson and Anne Marie Austin

Location: Flat 37, Moorway Drive, Blackley, M9 7HR

Features of property:

- Seventh floor
- Fully furnished: living room furniture and TV
- Kitchen with cooking facilities
- Bathroom = wet room
- Single profiling bed and bed linen (an extra single bed can be provided for a couple)
- Key safe and spare keys available.



Whitebeck Court Blackley

Two-bedroom apartment

Scheme type: Extra Care scheme with Northwards

Age restriction: 60+

Onsite emergency support: Pull-cord technology connects to Control Centre for emergency help. Care team onsite 24/7

Facilities for disabled person: Fully adapted bathroom, doors and lift access to all floors

Scheme managers: Gill Simpson and Anne Marie Austin

Location: Flat 72, Moorway Drive, Blackley, M9 7HR

Features of property:

- Thirteenth floor
- Fully furnished: living room furniture and TV
- Kitchen with cooking facilities
- Bathroom = wet room
- Single beds and bed linen
- Key safe and spare keys available.

Additional information:

- Care team provides double cover.



Hudson Court Blackley

One-bedroom apartment

Scheme type: Sheltered scheme with Johnnie Johnson

Age restriction: 55+

Onsite emergency support: Pull-cord technology connects to Control Centre for emergency help, but no onsite care team

Facilities for disabled person: Wet room, level access, wide doorways, and wheelchair-accessible. Communal wet room available on second floor

Scheme managers: Anne Moth and Mo McCann

Location: Flat 4, Sherwell Road, Blackley, M9 8DJ

Features of property:

- Ground floor
- Fully furnished: living room furniture and TV
- Kitchen with cooking facilities
- Bathroom = wet room
- Two single beds and bed linen
- Suitable for couples
- Key safe and spare keys available.



Hudson Court Blackley

One-bedroom apartment

Scheme type: Sheltered scheme with Johnnie Johnson

Age restriction: 55+ and DTOC (Delayed Transfer of Care) cases only

Onsite emergency support: Pull-cord technology connects to Control Centre for emergency help, but no onsite care team

Facilities for disabled person: Wet room, level access, wide doorways and wheelchair-accessible. Communal wet room available on second floor

Scheme managers: Anne Moth and Mo McCann

Location: Flat 16, Sherwell Road, Blackley, M9 8DJ

Features of property:

- First floor
- Fully furnished: living room furniture and TV
- Kitchen with cooking facilities
- Bathroom = level room
- One single bed and bed linen
- Key safe and spare keys available.



The Byrons Blackley

Two-bedroom apartment

Scheme type: Extra Care scheme with Great Places

Age restriction: 55+, DTOC (Delayed Transfer of Care) cases only

Onsite emergency support: Pull-cord technology connects to Control Centre for emergency help. Care team staff onsite 24/7

Facilities for disabled person: Fully adapted bathroom with accessible shower

Scheme manager: Anna Thompson

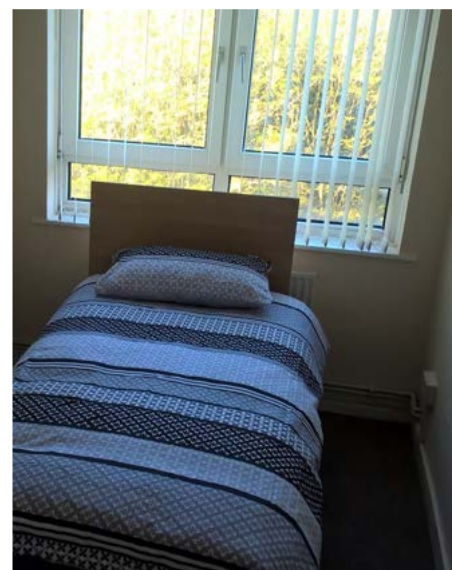
Location: Flat 39, The Byrons,
60 Bank House Road, Blackley, M9 8LY

Features of property:

- Second floor, door and lift access to all floors
- Fully furnished: living room furniture and TV
- Kitchen with cooking facilities
- Bedroom one: single bed and bed linen, chest of drawers and double wardrobe
- Bedroom two: single profiling bed and bed linen, chest of drawers and double wardrobe
- Communal laundry.

Additional information:

- Care team provides double cover.



Cartmel Court Blackley

Two-bedroom apartment

Scheme type: General Needs Housing scheme with Northwards

Age restriction: 40–55

Onsite emergency support: Pull-cord technology connects to Control Centre for emergency help. No onsite care team 24/7

Facilities for disabled person: Adapted bathroom with step-up shower (not suitable for wheelchairs)

Scheme managers: Bernadette Carding and Rob Doherty

Location: Flat 36, Cartmel Court, Moorway Drive, Blackley, M9 7HT

Features of property:

- Sixth floor
- Fully furnished: living room furniture and TV
- Kitchen with cooking facilities
- Shower over bath
- Two bedrooms – single bed and bed linen provided.



Apprentice Court Harpurhey

One-bedroom apartment

Scheme type: Sheltered Housing scheme with Northwards

Age restriction: 55+, DTOC (Delayed Transfer of Care) cases only

Onsite emergency support: Pull-cord technology connects to Control Centre for emergency help. No onsite care team 24/7

Facilities for disabled person: Adapted bathroom with step-up shower

Scheme manager: Carol Pridding

Location: Flat 5, Apprentice Court,
2 Caversham Drive, Harpurhey, M9 4JH

Features of property:

- Ground floor
- One large bedroom
- Fully furnished: living room furniture and TV
- Kitchen with cooking facilities
- Adapted bathroom with step-up shower
- Single bed and bed linen
- Separate communal laundry facilities.



Clifford Hilditch Court Crumpsall

One-bedroom apartment

Scheme type: Sheltered scheme with Johnnie Johnson

Age restriction: 55+

Onsite emergency support: Pull-cord technology connects to Control Centre for emergency help, but no onsite care team

Facilities for disabled person: Adapted bath, suitable for someone with a small wheelchair

Scheme managers: Anne Moth and Mo McCann

Location: Flat 4, Claude Street, Crumpsall, M8 5AW

Features of property:

- Ground floor
- Fully furnished: living room furniture and TV
- Kitchen with cooking facilities
- Bathroom = adapted bath
- Single bed and bed linen
- Separate communal laundry room, scooter room and communal shower with a cubicle
- Key safe and spare keys available.



Duxford Lodge Crumpsall

Studio apartment

Scheme type: Sheltered scheme with Johnnie Johnson

Age restriction: 55+

Onsite emergency support: Pull-cord technology connects to Control Centre for emergency help, but no onsite care team

Facilities for disabled person: Not suitable for wheelchairs

Scheme managers: Anne Moth and Mo McCann

Location: Flat 12, Holland Road, Crumpsall, M8 4WW

Features of property:

- Second floor
- Fully furnished: living room furniture and TV
- Kitchen with cooking facilities
- Bathroom – Large shower cubicle with small step-up and shower chair
- Single bed and bed linen
- 50% Chinese tenants
- Communal bathroom with shower that has a step – not accessible
- Key safe and spare keys available.



Butler Court Miles Platting

Two-bedroom apartment

Scheme type: Extra Care scheme with Jigsaw Homes (formerly Adactus)

Age restriction: 55+, DTOC (Delayed Transfer of Care) cases only

Onsite emergency support: Pull-cord technology connects to call centre for emergency help. Onsite care team 24/7

Facilities for disabled person: Doors and lift access to all floors. Adapted accessible shower and shower chair

Scheme managers: Susan Jones and Colette Reynolds

Location: Flat 39, Butler Court, Gunson Street, Miles Platting, M40 7WU

Features of property:

- Eighth floor
- Bedroom 1: single bed and bed linen
- Bedroom 2: single bed and bed linen
- Fully furnished living room with TV (living room has part-raised floor)
- Separate kitchen with full cooking facilities
- Communal laundry.



Victoria Court Higher Openshaw

One-bedroom apartment

Scheme type: Sheltered scheme with Jigsaw Homes (formerly Adactus)

Age restriction: 55+ and DTOC (Delayed Transfer of Care) cases only

Onsite emergency support: Pull-cord technology connects to Control Centre for emergency help, but no onsite care team

Facilities for disabled person: Wet room, level access, wide doorways and wheelchair-accessible

Scheme manager: Gabriel Abodunde

Location: Flat 23, Victoria Court, Bringham Street, Higher Openshaw, M11 2YA

Features of property:

- Second floor
- One bedroom
- Fully furnished: studio, living room furniture and TV
- Kitchen with cooking facilities
- Bathroom = wet room
- Washing machine
- Single bed and bed linen
- Key safe and spare keys available.



Hibiscus Court Whalley Range

One-bedroom apartment

Scheme type: Extra Care scheme with Jigsaw Homes (formerly Adactus)

Age restriction: 55+, DTOC (Delayed Transfer of Care) cases only

Onsite emergency support: Pull-cord technology connects to Control Centre for emergency help, plus onsite care team 24/7

Facilities for disabled person:

Adapted bathroom. There is a specially adapted communal bathroom suite and changing room

Scheme manager: Yvonne Leacock

Location: Flat 15, 16 Sedgeborough Road, Whalley Range, M16 7HU

Features of property:

- First floor
- Fully furnished: living room furniture and TV
- Kitchen with cooking facilities
- Adapted bathroom
- Single bed and bed linen
- Separate communal laundry facilities
- Key safe and spare keys available.

Additional information:

- Single cover provided by the care team.



Tangmere Court Whalley Range

Two-bedroom apartment

Scheme type: Sheltered scheme with Johnnie Johnson

Age restriction: 55+

Onsite emergency support: Pull-cord technology connects to Control Centre for emergency help, but no onsite care team

Facilities for disabled person:

Adapted bathroom

Scheme managers: Anne Moth and Mo McCann

Location: Flat 8, Dudley Road, Whalley Range, M16 8DF

Features of property:

- Ground floor
- Fully furnished: living room furniture and TV
- Kitchen with cooking facilities
- Adapted bathroom
- Profiling bed in main bedroom and single bed in second bedroom
- Washing machine provided in apartment, and communal laundry
- Communal bathroom in scheme guest room
- Key safe and spare keys available.



Le Bas House Withington

One-bedroom apartment

Scheme type: Sheltered scheme with Johnnie Johnson

Age restriction: 55+ and DTOC (Delayed Transfer of Care) cases only

Onsite emergency support: Pull-cord technology connects to Control Centre for emergency help, but no onsite care team

Facilities for disabled person:

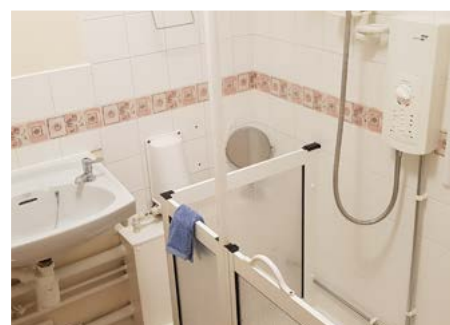
Could be suitable for a small wheelchair.

Scheme managers: Anne Moth and Mo McCann

Location: 6 Ormskirk Avenue, Withington, M20 1HJ

Features of property:

- Ground floor
- Fully furnished: living room furniture and TV
- Kitchen with cooking facilities
- Bathroom: large shower cubicle with small step-up
- Single bed and bed linen
- Key safe and spare keys available.



Arden Court Central

One-bedroom apartment

Scheme type: Sheltered scheme with Anchor

Age restriction: 55+

Onsite emergency support: Pull-cord technology connects to Control Centre for emergency help, but no onsite care team

Facilities for disabled person: Bathroom with adapted accessible small step-up shower

Scheme managers: Angela Quigg and Kerry-Anne Wilkes

Location: Flat 30, Arden Court,
1 Oakhouse Drive, M21 8EW

Features of property:

- First floor, with lift access
- Fully furnished lounge with TV
- Separate kitchen with cooking facilities
- Bathroom with adapted accessible small step-up shower
- Single bed and bed linen
- Separate communal laundry facilities
- Unsuitable for wheelchair-user.



Rowan Court Ladybarn

Studio apartment

Scheme type: Sheltered scheme with Anchor

Age restriction: 55+

Onsite emergency support: Pull-cord technology connects to Control Centre for emergency help, but no onsite care team

Facilities for disabled person: Wet room (not suitable for wheelchairs)

Scheme manager: Donna Colsh

Location: Flat 10 and 12, Green Street, Ladybarn, M14 6TN

Features of property:

- Ground floor
- Fully furnished: living room furniture and TV
- Kitchen with cooking facilities
- Bathroom = wet room
- Single bed and bed linen
- Communal laundry facilities
- Communal bathroom with bath
- Key safe and spare keys available.



Westfields Baguley

Studio apartment

Scheme type: Extra Care scheme with Anchor

Age restriction: 55+

Onsite emergency support: Pull-cord technology connects to Control Centre for emergency help, plus onsite care team 24/7

Facilities for disabled person:

Adapted bathroom. There is also a communal shower room

Scheme manager: Sam Tan

Location: Flats 9 and 10, 212 Hall Lane, Baguley, M23 1LP

Features of property:

- Ground floor
- Fully furnished: living room furniture and TV
- Kitchen with cooking facilities
- Adapted bathroom
- Single bed and bed linen
- Separate community laundry with three washers and two dryers
- Key safe and spare keys.

Additional information:

- Double cover is provided by the onsite care team.



Village 135 Wythenshawe

Three two-bedroom apartments

Scheme type: Extra Care scheme with Wythenshawe Community Housing Group

Age restriction: 55+

Onsite emergency support: Pull-cord technology connects to Control Centre for emergency help, plus onsite care team 24/7. Onsite reablement for the neighbourhood apartments

Facilities for disabled person: Wet room and wheelchair-accessible. Communal bathing suite in scheme

Scheme managers: Steve Campbell and Amanda Seals

Location: Flats 82, 83 and 84, 3 Hollyhedge Court Road, Wythenshawe, M22 4ZP

Features of property:

- Ground floor
- Fully furnished: living room furniture and TV
- Kitchen with cooking facilities
- Bathroom = wet room
- Washing machine
- Profiling bed in main bedroom and single bed in second bedroom
- Key safe and spare keys available.

Additional information: Single cover provided from 7am to 10pm; night-time cover from 10pm to 7am. Double cover can be provided if capacity allows.



Village 135 Wythenshawe

Two two-bedroom apartments

Scheme type: Extra Care scheme with Wythenshawe Community Housing Group

Age restriction: 55+

Onsite emergency support: Pull-cord technology connects to Control Centre for emergency help, plus onsite care team 24/7. Onsite reablement for the neighbourhood apartments

Facilities for disabled person: Wet room and wheelchair-accessible. Communal bathing suite in scheme

Scheme managers: Steve Campbell and Amanda Seals

Location: Flats 88 and 89, 3 Hollyhedge Court Road, Wythenshawe, M22 4ZP

Features of property:

- First floor
- Fully furnished: living room furniture and TV
- Kitchen with cooking facilities
- Bathroom = wet room
- Washing machine
- Profiling bed in main bedroom and single bed in second bedroom
- Key safe and spare keys available.

Additional information: Single cover provided from 7am to 10pm; night-time cover from 10pm to 7am. Double cover can be provided if capacity allows.

