



MANCHESTER  
CITY COUNCIL

# Neighbourhood Apartments for Health and Social Care needs

Property Brochure



**Manchester**  
Integrated Care Partnership



**Manchester Local  
Care Organisation**

[manchester.gov.uk](http://manchester.gov.uk)

# Contents

## North

<b>Apprentice Court</b> .....	6
Sheltered Housing (55+)	
<b>Butler Court</b> .....	7
Extra Care Housing (55+)	
<b>The Byrons</b> .....	8
Sheltered Housing (55+)	
<b>Harry Pigott Court</b> .....	9
Sheltered Housing (55+)	
<b>Hudson Court</b> .....	10–11
Sheltered Housing (55+)	
<b>Whitebeck Court</b> .....	12–13
Extra Care Housing (60+)	
<b>Victoria Court</b> .....	14
Sheltered Housing (55+)	

## Central

<b>Brunswick Village</b> .....	15–17
Extra Care Housing (55+)	
<b>The Depot</b> .....	18–22
General Needs (45–55 and 55+)	
<b>Gorton Mill House</b> .....	23
Extra Care Housing (55+)	
<b>Hibiscus Court</b> .....	24
Extra Care Housing (55+)	
<b>Tangmere Court</b> .....	25
Sheltered Housing (55+)	

## South

<b>Dahlia House</b> .....	26
Extra Care Housing (55+)	
<b>Rowan Court</b> .....	27
Sheltered Housing (55+)	
<b>Village 135</b> .....	28–29
Extra Care Housing (55+)	
<b>Westfields</b> .....	30
Extra Care Housing (55+)	

# Use of Neighbourhood Apartments

Neighbourhood Apartments (formerly known as Transitional Flats) are intended for older people so they can benefit from a short stay due to a variety of reasons. An eligible older person could:

- be leaving hospital and unable to return home
- be homeless, with additional care and support needs
- need more suitable property for a short period of time, eg. have mobility difficulties and be waiting for major adaptations
- have health, care and support requirements and need to move to an environment where 24-hour access to care and support is available.

Neighbourhood Apartments are not suitable as a long-term placement for a person, regardless of care and support needs. The maximum stay is 12 weeks, unless the duration of the placement is agreed with the Neighbourhood Apartment Co-ordinator.

An application for a Neighbourhood Apartment referral can only be made by a health or social care professional, eg. District Nurse, GP, Hospital Social Worker, Community Social Worker, or Primary Assessment Officer. All documentation must be completed, eg. a Referral pro forma and a Scoring Tool. These provide the Neighbourhood Apartment Co-ordinator with the necessary information about the individual's circumstances and health, care and support needs, as well as an indicative needs score, which may be used where demand exceeds supply.

**All cases must have a forward exit plan, eg. a next destination: home, rehousing, residential care etc.**

All apartments are strictly non-smoking, no pets are allowed (social care professionals may need to arrange kennelling where eligibility criteria are met) and family, friends and carers are not entitled to use the facilities, eg. sleepover. Citizens who are being referred for a stay in a Neighbourhood Apartment will be expected to sign a licence agreement that covers the expectations and conduct of living in both the apartment and the overall Sheltered Housing/Extra Care Scheme. If any citizen staying in an apartment breaches these rules, the keyworker will be expected to find alternative accommodation and move the person quickly. Obviously, there will be a full discussion to assess the situation and agree a way forward on a case-by-case basis.

All Neighbourhood Apartments are fully furnished.

If the exit plan for a citizen is rehousing, it is the allocated worker's responsibility to ensure the following:

- The citizen is made aware that they will need to save money to support their future move to a new property, to support where necessary with rent, bills, moving and furniture costs.
- Appropriate benefits are in place and if support is required with this then the necessary referrals are made.
- Appropriate finance arrangements are in place if necessary, for example – support from Client Financial Services.

If a citizen does not have furniture to take with them to their new property, they can apply for the Manchester City Council Welfare Provision Scheme, which provides a basic furniture package. The allocated worker can apply for this on behalf of the citizen once a new

property has been signed for. There are also many charities that can support with furniture. There is no charge for staying in a Neighbourhood Apartment. The only costs will be food, beverages and personal items. Where the person moving in has no family or friends to collect initial shopping, this would then be the responsibility of the Keyworker/ Referrer. If a citizen requires support with cleaning and shopping, please ensure that this is included in the support plan, as this is not included in the Neighbourhood Apartment's service.

**All referrals need to be sent to:**  
**neighbourhoodapartments**  
**@manchester.gov.uk**

#### **Neighbourhood Apartment Co-ordinators' contact details:**

##### **Kate Kay**

Neighbourhood Apartment Co-ordinator  
Adult Social Care  
Tel: 0161 219 2087  
Mobile: 07773 537458  
Email: **kate.kay@manchester.gov.uk**  
or **neighbourhoodapartments**  
**@manchester.gov.uk**

##### **Eileen Reynolds**

Neighbourhood Apartment Co-ordinator  
Adult Social Care  
Tel: 0161 219 2687  
Mobile: 07970 378994  
Email: **e.reynolds@manchester.gov.uk**  
or **neighbourhoodapartments**  
**@manchester.gov.uk**

##### **Daljit Singh (Dan)**

Neighbourhood Apartment Co-ordinator  
Adult Social Care  
Tel: 0161 219 6324  
Mobile: 07971 617 377  
Email: **daljit.singh@manchester.gov.uk**  
or **neighbourhoodapartments**  
**@manchester.gov.uk**

To find out more information about Neighbourhood Apartments sign up to access the MLCO extranet online and join the mailing list.

Email: **communications@manchesterlco.org** with your details.

#### **The MLCO extranet contains:**

- Information about the apartments, schemes and how to be referred
- Details of each apartment with photos
- Comprehensive FAQs – everything you need to know about making referrals and what happens when people stay there
- The current availability and forms to download to request an apartment
- Information about the Housing Options for Older People service (HOOP).



Find out more about this property:

<https://housingcare.org/housing-care/facility-info-11529-apprentice-court-ancoats-england>



## Apprentice Court (Flat 5) Harpurhey

### One-bedroom apartment

**Scheme type:** Sheltered Housing scheme with Northwards

**Age restriction:** 55+

#### Onsite emergency support:

Pull-cord technology connects to Control Centre for emergency help, but no onsite care team

#### Facilities for disabled person:

Adapted bathroom with step-up shower; not suitable for wheelchairs

#### Scheme manager:

Carol Pridding

**Location:** Flat 5, Apprentice Court, 2 Caversham Drive, Harpurhey, Manchester M9 4JH

#### Features of property:

- Ground floor
- One large bedroom
- Fully furnished
- TV provided
- Kitchen includes all appliances and kitchenware
- Adapted bathroom with step-up shower
- Single bed and bed linen
- Key safe and spare keys
- Washing machine not provided

#### Features of the scheme:

- Separate communal laundry facilities
- Lift access to all floors
- Communal lounge

Find out more about this property:

<https://housingcare.org/housing-care/facility-info-11645-butler-court-miles-platting-england>



## Butler Court (Flat 39) Miles Platting

### Two-bedroom apartment

**Scheme type:** Extra Care Housing scheme with Jigsaw Homes (formerly Adactus)

**Age restriction:** 55+

#### Onsite emergency support:

Pull-cord technology connects to call centre for emergency help. Onsite care team 24/7 providing double cover

#### Facilities for disabled person:

Doors and lift access to all floors. Adapted accessible shower and shower chair. Living room has part-raised floor (so not suitable for wheelchairs)

**Scheme managers:** Susan Jones and Colette Reynolds

**Location:** Flat 39, Butler Court, Gunson Street, Miles Platting, Manchester M40 7WU

#### Features of property:

- Eighth floor
- Bedroom 1: single bed and bed linen
- Bedroom 2: single bed and bed linen
- Fully furnished (living room has part-raised floor)
- TV provided
- Kitchen includes all appliances and kitchenware

- Key safe and spare keys
- Washing machine not provided

#### Features of the scheme:

- Access to scooter facilities
- Communal laundry
- Lift access to all floors
- Lounge and dining room
- Garden
- Hairdressing salon
- Library and activity room

Find out more about this property:

<https://housingcare.org/housing-care/facility-info-158831-the-byrons-higher-blackley-england>



## The Byrons (Flat 39) Higher Blackley

### Two-bedroom apartment

**Scheme type:** Sheltered Housing scheme with Great Places

**Age restriction:** 55+

#### Onsite emergency support:

Pull-cord technology connects to Control Centre for emergency help, but no onsite care team

#### Facilities for disabled person:

Adapted bathroom with accessible shower; suitable for wheelchairs

#### Scheme manager:

Calvin Brown

**Location:** Flat 39, The Byrons, 60 Bank House Road, Blackley, Manchester M9 8LY

#### Features of property:

- Second floor
- Fully furnished
- TV provided
- Kitchen includes all appliances and kitchenware
- Bedroom 1: single bed and bed linen
- Bedroom 2: single profiling bed and bed linen
- Key safe and spare keys
- Washing machine not included

#### Features of the scheme:

- Lift access to all floors
- Communal laundry
- Access to scooter facilities
- Lounge
- Restaurant open to public
- Garden
- Hairdressing salon



Find out more about this property:

<https://housingcare.org/housing-care/facility-info-11519-harry-pigott-court-blackley-england>



## Harry Pigott Court (Flat 16) Blackley

**One-bedroom apartment**

**Scheme type:** Sheltered Housing scheme with Northwards

**Age restriction:** 55+

### Onsite emergency support:

Pull-cord technology connects to Control Centre for emergency help, but no onsite care team

### Facilities for disabled person:

Not suitable for wheelchairs

### Scheme manager:

Suzanne Corcoran

**Location:** Flat 16, Plant Hill Road, Blackley, Manchester M9 6WQ

### Features of property:

- First floor
- TV provided
- Fully furnished
- Kitchen includes all appliances and kitchenware
- Bathroom with walk-in shower
- Single bed and bed linen
- Key safe and spare keys available
- Washing machine not included

### Features of the scheme:

- Separate communal laundry room
- Scooter room
- Communal shower with a cubicle
- Lift access to all floors
- Communal lounge

Find out more about this property:

<https://housingcare.org/housing-care/facility-info-87789-hudson-court-blackley-england>



## Hudson Court (Flat 16) Blackley

### One-bedroom apartment

**Scheme type:** Sheltered Housing scheme with Johnnie Johnson

**Age restriction:** 55+

#### Onsite emergency support:

Pull-cord technology connects to Control Centre for emergency help, but no onsite care team

#### Facilities for disabled person:

Shower with a step up, not suitable for wheelchairs

#### Scheme manager:

Joanne Galston

**Location:** Flat 16, Sherwell Road, Blackley, Manchester M9 8DJ

#### Features of property:

- First floor
- Fully furnished
- TV provided
- Kitchen includes all appliances and kitchenware
- One single bed and bed linen
- Key safe and spare keys available
- Washing machine not included

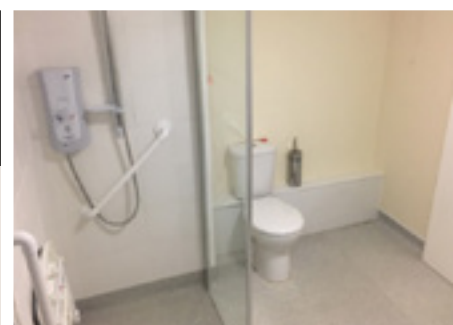
#### Features of the scheme:

- Access to scooter facilities
- Communal wet room available on second floor
- Communal laundry
- Lift access to all floors
- Communal lounge



Find out more about this property:

<https://housingcare.org/housing-care/facility-info-87789-hudson-court-blackley-england>



## Hudson Court (Flat 4) Blackley

### One-bedroom apartment

**Scheme type:** Sheltered Housing scheme with Johnnie Johnson

**Age restriction:** 55+

#### Onsite emergency support:

Pull-cord technology connects to Control Centre for emergency help, but no onsite care team

#### Facilities for disabled person:

Wet room, level access, wide doorways, and wheelchair-accessible. Communal wet room available on second floor

#### Scheme manager:

Joanne Galston

**Location:** Flat 4, Sherwell Road, Blackley, Manchester M9 8DJ

#### Features of property:

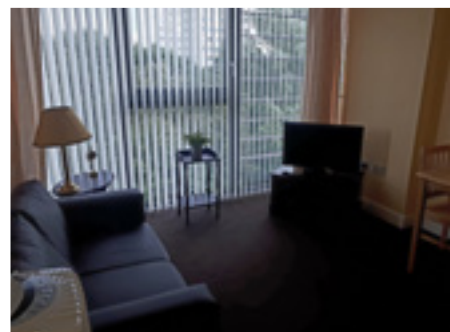
- Ground floor
- Fully furnished
- TV provided
- Kitchen includes all appliances and kitchenware
- Bathroom (wet room)
- Large bedroom has single bed and suitable to add profiling bed
- Suitable for couples
- Key safe and spare keys available
- Washing machine not included

#### Features of the scheme:

- Access to scooter facilities
- Communal wet room available on second floor
- Communal laundry
- Lift access to all floors
- Communal lounge

Find out more about this property:

<https://housingcare.org/housing-care/facility-info-158003-whitebeck-court-blackley-england>



## Whitebeck Court (Flat 37) Blackley

### One-bedroom apartment

**Scheme type:** Extra Care Housing scheme with Northwards

**Age restriction:** 60+

#### Onsite emergency support:

Pull-cord technology connects to Control Centre for emergency help. Care team provides double cover – onsite 24/7

#### Facilities for disabled person:

Fully adapted bathroom and doors, wheelchair accessible

**Scheme managers:** Anne Marie Austin and Christine Martinohara

**Location:** Flat 37, Moorway Drive, Blackley, Manchester M9 7HR

#### Features of property:

- Seventh floor
- Fully furnished
- TV provided
- Kitchen includes all appliances and kitchenware
- Bathroom (wet room)
- Single profiling bed and bed linen (can provide extra single bed for a couple)
- Key safe and spare keys available
- Washing machine not included

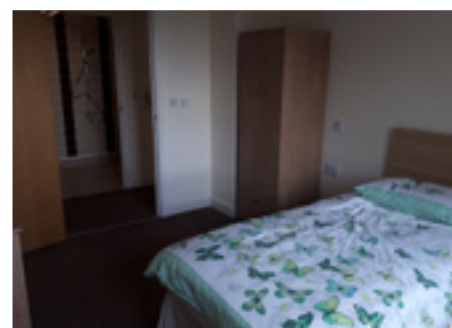
#### Features of the scheme:

- Lift access to all floors
- Communal lounge
- Bistro open to the public
- Communal laundry
- Guest facilities
- Garden and conservatory
- Community centre
- Hobby room and activities room
- Shop, hairdressing salon, library
- Assisted bathing facility
- Sky lounge on 16th floor



Find out more about this property:

<https://housingcare.org/housing-care/facility-info-158003-whitebeck-court-blackley-england>



## Whitebeck Court (Flat 72) Blackley

### Two-bedroom apartment

**Scheme type:** Extra Care Housing scheme with Northwards

**Age restriction:** 60+

#### Onsite emergency support:

Pull-cord technology connects to Control Centre for emergency help. Care team provides double cover – onsite 24/7

#### Facilities for disabled person:

Fully adapted bathroom and doors, suitable for wheelchairs

#### Scheme managers:

Anne Marie Austin and Christine Martinohara

**Location:** Flat 72, Moorway Drive, Blackley, Manchester M9 7HR

#### Features of property:

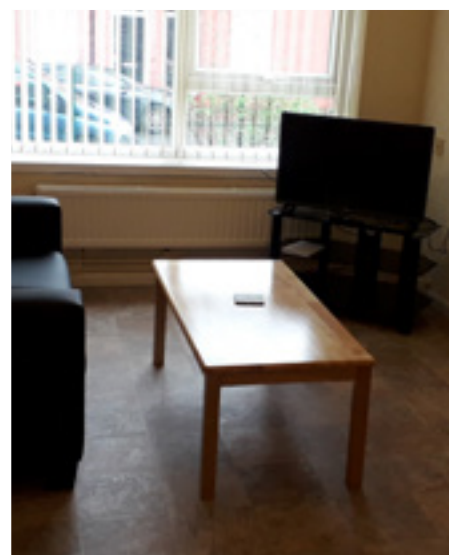
- Thirteenth floor
- Fully furnished
- TV provided
- Kitchen includes all appliances and kitchenware
- Bathroom (wet room)
- Single beds and bed linen
- Key safe and spare keys available.
- Washing machine not provided

#### Features of the scheme:

- Lift access to all floors
- Communal lounge
- Bistro open to the public
- Communal laundry
- Guest facilities
- Garden and conservatory
- Community centre
- Hobby room and activities room
- Shop, hairdressing salon, library
- Assisted bathing facility
- Sky lounge on 16th floor

Find out more about this property:

<https://housingcare.org/housing-care/facility-info-9443-victoria-court-higher-openshaw-england>



## Victoria Court (Flat 23) Higher Openshaw

### One-bedroom apartment

**Scheme type:** Sheltered Housing scheme with Jigsaw Homes (formerly Adactus)

**Age restriction:** 55+

#### Onsite emergency support:

Pull-cord technology connects to Control Centre for emergency help, but no onsite care team

#### Facilities for disabled person:

Not suitable for wheelchairs

#### Scheme manager:

Gabriel Abodunde

**Location:** Flat 23, Victoria Court, Brigham Street, Higher Openshaw, Manchester M11 2YA

#### Features of property:

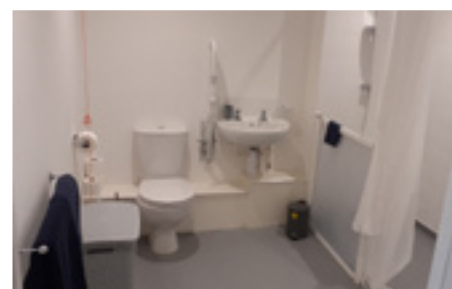
- Second floor
- One bedroom
- Fully furnished
- TV provided
- Kitchen includes all appliances and kitchenware
- Bathroom (wet room)
- Washing machine not provided
- Single bed and bed linen
- Key safe and spare keys available

#### Features of the scheme:

- Access to scooter facilities but limited spaces
- Lift access to all floors
- Communal lounge

Find out more about this property:

<https://housingcare.org/housing-care/facility-info-164117-brunswick-village-brunswick-england>



## Brunswick Village (Flat 9) Brunswick

### Two-bedroom apartment

**Scheme type:** Extra Care Housing scheme with Onward Homes and Northwards Housing

**Age restriction:** 55+

#### Onsite emergency support:

Pull-cord technology connects to Control Centre for emergency help; double cover by onsite care team 24/7

#### Facilities for disabled:

Adapted bathroom, suitable for wheelchairs, communal assisted bathing

**Scheme managers:** Lisa Anderton and Donna Shaw

**Location:** Flat 9, Brunswick Village, 50 Brunswick Street, Manchester M13 9PE

#### Features of property:

- First floor
- Fully furnished
- TV provided
- Kitchen with cooking facilities
- Adapted bathroom
- Double bedroom: double bed
- Single bedroom: single bed
- Washing machine included
- Key safe and spare keys available

#### Features of the scheme:

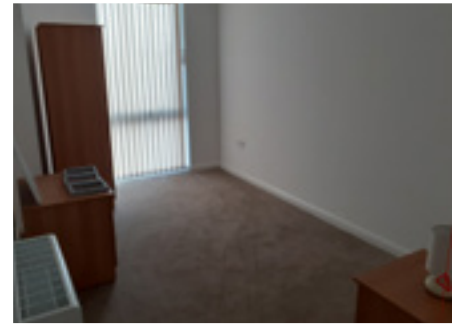
- Dining room

- Laundry
- Guest facilities
- Garden and community centre
- Hobby room
- Activities room
- Cafe, shop, hairdressing salon
- Access to scooter facilities but only allowed downstairs
- Lift access to all floors
- Gym
- Communal assisted bathing facility



Find out more about this property:

<https://housingcare.org/housing-care/facility-info-164117-brunswick-village-brunswick-england>



## Brunswick Village (Flat 32) Brunswick

### Two-bedroom apartment

**Scheme type:** Extra Care scheme with Onward Homes and Northwards Housing

**Age restriction:** 55+

#### Onsite emergency support:

Pull-cord technology connects to Control Centre for emergency help; double cover by onsite care team 24/7

#### Facilities for disabled:

Adapted bathroom, suitable for wheelchairs, communal assisted bathing

**Scheme managers:** Lisa Anderton and Donna Shaw

**Location:** Flat 32, Brunswick Village, 50 Brunswick Street, Manchester M13 9PE

#### Features of property:

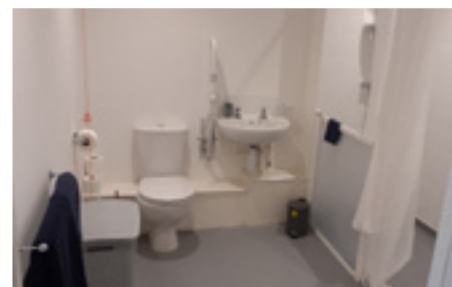
- Second floor
- Fully furnished
- TV provided
- Kitchen includes all appliances and kitchenware
- Adapted bathroom
- Double bedroom: double bed
- Single room: no bed – profiling bed can be used if necessary
- Washing machine included
- Key safe and spare keys

#### Features of the scheme:

- Dining room
- Laundry
- Guest facilities
- Garden and Community centre
- Hobby room
- Activities room
- Cafe, shop, hairdressing salon
- Access to scooter facilities but only allowed downstairs
- Lift access to all floors
- Gym



Find out more about this property:  
<https://housingcare.org/housing-care/facility-info-164117-brunswick-village-brunswick-england>



## Brunswick Village (Flat 34) Brunswick

### Two-bedroom apartment

**Scheme type:** Extra Care scheme with Onward Homes and Northwards Housing

**Age restriction:** 55+

#### Onsite emergency support:

Pull-cord technology connects to Control Centre for emergency help; double cover by onsite care team 24/7

#### Facilities for disabled:

Adapted bathroom, suitable for wheelchairs, communal assisted bathing

**Scheme managers:** Lisa Anderton and Donna Shaw

**Location:** Flat 34, Brunswick Village, 50 Brunswick Street, Manchester M13 9PE

#### Features of property:

- Second floor
- Fully furnished
- TV provided
- Kitchen includes all appliances and kitchenware
- Adapted bathroom
- Double bedroom: double bed
- Single room: no bed – profiling bed can be used if necessary
- Key safe and spare keys
- Washing machine included

#### Features of the scheme:

- Dining room
- Laundry
- Guest facilities
- Garden and community centre
- Hobby room
- Activities room
- Cafe, shop, hairdressing salon
- Access to scooter facilities but only allowed downstairs
- Lift access to all floors

Find out more about this property:

<https://risehomes.co.uk/developments/the-depot/1-2-bedroom-apartments/>



## The Depot (Flat 1) Moss Side

### Two-bedroom apartment

**Scheme type:** General Needs scheme

**Age restriction:** 55+

#### Onsite emergency support:

Pull-cord technology connects to community alarm for emergency help. Reablement provide onsite care 8am–8pm. No double cover

#### Facilities for disabled:

Suitable for small wheelchairs. First bathroom has step-up shower. Main en suite bathroom has a bath

#### Reablement managers:

Rachel Millar, Eve Phillips and Nicola Scargill

**Location:** Flat 1, Route 1, The Depot, 4 Bowes Street, Manchester M14 4BT

#### Features of property:

- Ground floor
- Fully furnished
- TV provided
- Kitchen includes all appliances and kitchenware
- Assistive technology: falls detector, smoke detector, flood detector, carbon monoxide detector, and door, chair and bed sensors

- Bathroom has step-up shower
- Double bedroom: double bed
- Single room: no bed – use profiling bed if necessary
- Washing machine included
- Key safe and spare keys

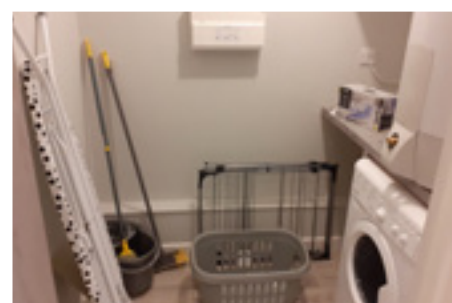
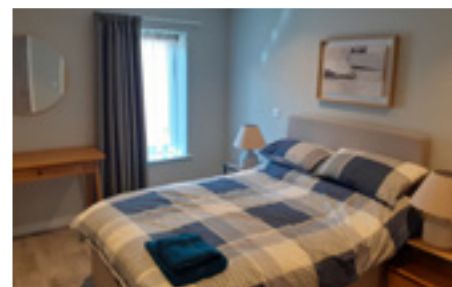
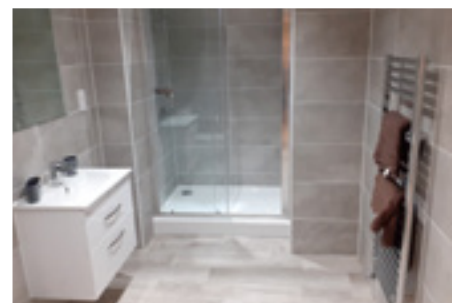
#### Features of the scheme:

- Facilities available to access at Elmswood Extra Care scheme (around the corner): dining room, laundry, guest facilities, garden
- No scooter facilities
- Lift access to all floors



Find out more about this property:

<https://risehomes.co.uk/developments/the-depot/1-2-bedroom-apartments/>



## The Depot (Flat 2) Moss Side

### One-bedroom apartment

**Scheme type:** General Needs scheme

**Age restriction:** 55+

#### Onsite emergency support:

Pull-cord technology connects to community alarm for emergency help. Reablement provide onsite care 8am–8pm. No double cover

#### Facilities for disabled:

Suitable for small wheelchairs. Bathroom has step-up shower

#### Reablement managers:

Rachel Millar, Eve Phillips and Nicola Scargill

**Location:** Flat 2, Route 1, The Depot, 4 Bowes Street, Manchester M14 4BT

#### Features of property:

- Ground floor
- Fully furnished
- TV provided
- Kitchen includes all appliances and kitchenware
- Assistive technology: falls detector, smoke detector, flood detector, carbon monoxide detector, and door, chair and bed sensors
- Bathroom has step-up shower
- One-bedroom apartment with double bed

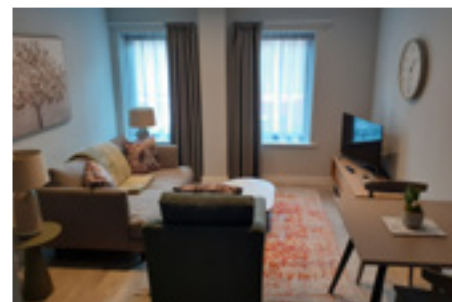
- Washing machine included
- Key safe and spare keys

#### Features of the scheme:

- Facilities available to access at Elmswood Extra Care scheme (around the corner): dining room, laundry, guest facilities, garden
- No scooter facilities
- Lift access to all floors

Find out more about this property:

<https://risehomes.co.uk/developments/the-depot/1-2-bedroom-apartments/>



## The Depot (Flat 3) Moss Side

### One-bedroom apartment

**Scheme type:** General Needs scheme

**Age restriction:** 55+

#### Onsite emergency support:

Pull-cord technology connects to community alarm for emergency help. Reablement provide on-site care 8am–8pm. No double cover

#### Facilities for disabled:

May be suitable for a small wheelchair. Bathroom has step-up shower

#### Reablement managers:

Rachel Millar, Eve Phillips and Nicola Scargill

**Location:** Flat 3, Route 1, The Depot, 4 Bowes Street, Manchester M14 4BT

#### Features of property:

- Ground floor
- Fully furnished
- TV provided
- Kitchen includes all appliances and kitchenware
- Assistive technology: falls detector, smoke detector, flood detector, carbon monoxide detector, and door, chair and bed sensors
- Bathroom has step-up shower
- One-bedroom apartment with double bed

- Washing machine included
- Key safe and spare keys available

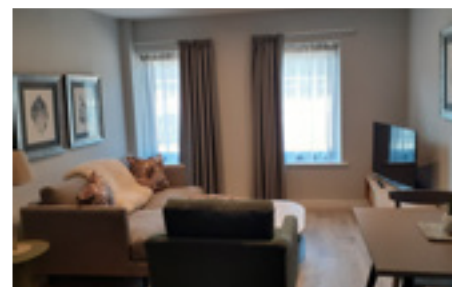
#### Features of the scheme:

- Facilities available to access at Elmswood Extra Care scheme (around the corner): dining room, laundry, guest facilities, garden
- No scooter facilities
- Lift access to all floors



Find out more about this property:

<https://risehomes.co.uk/developments/the-depot/1-2-bedroom-apartments/>



## The Depot (Flat 4) Moss Side

### One-bedroom apartment

**Scheme type:** General Needs scheme

**Age restriction:** 45–55

#### Onsite emergency support:

Pull-cord technology connects to community alarm for emergency help. Reablement provide on-site care 8am–8pm. No double cover

#### Facilities for disabled:

May be suitable for a small wheelchair. Bathroom has step-up shower

#### Reablement managers:

Rachel Millar, Eve Phillips and Nicola Scargill

**Location:** Flat 4, Route 1, The Depot, 4 Bowes Street, Manchester M14 4BT

#### Features of property:

- Ground floor
- Fully furnished
- TV provided
- Kitchen includes all appliances and kitchenware
- Assistive technology: falls detector, smoke detector, flood detector, carbon monoxide detector, and door, chair and bed sensors
- Bathroom has step-up shower
- One-bedroom apartment with double bed

- Washing machine included
- Key safe and spare keys

#### Features of the scheme:

- Facilities available to access at Elmswood Extra Care scheme (around the corner): dining room, laundry, guest facilities, garden
- No scooter facilities
- Lift access to all floors

Find out more about this property:

<https://risehomes.co.uk/developments/the-depot/1-2-bedroom-apartments/>



## The Depot (Flat 5) Moss Side

### One-bedroom apartment

**Scheme type:** General Needs scheme

**Age restriction:** 45–55

#### Onsite emergency support:

Pull-cord technology connects to community alarm for emergency help. Reablement provide on-site care 8am–8pm. No double cover

#### Facilities for disabled:

May be suitable for a small wheelchair. Bathroom has step-up shower

#### Reablement managers:

Rachel Millar, Eve Phillips and Nicola Scargill

**Location:** Flat 5, Route 1, The Depot, 4 Bowes Street, Manchester M14 4BT

#### Features of property:

- Ground floor
- Fully furnished
- TV provided
- Kitchen includes all appliances and kitchenware
- Assistive technology: falls detector, smoke detector, flood detector, carbon monoxide detector, and door, chair and bed sensors

- Bathroom has step-up shower
- One-bedroom apartment with double bed
- Washing machine included
- Key safe and spare keys

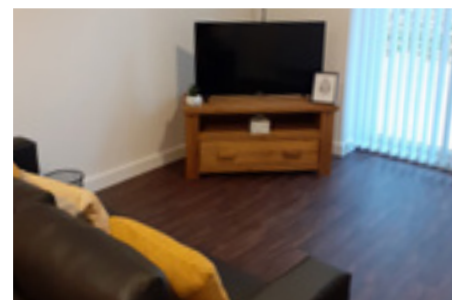
#### Features of the scheme:

- Facilities available to access at Elmswood Extra Care scheme (around the corner): dining room, laundry, guest facilities, garden
- No scooter facilities
- Lift access to all floors



Find out more about this property:

<https://housingcare.org/housing-care/facility-info-163333-gorton-mill-house-gorton-england>



## Gorton Mill House (Flat 18) Gorton

### One-bedroom apartment

**Scheme type:** Extra Care Housing scheme with Southway Housing

**Age restriction:** 55+

#### Onsite emergency support:

Pull-cord technology connects to Control Centre for emergency help; double cover by onsite care team 24/7

#### Facilities for disabled:

Adapted bathroom, suitable for wheelchairs, communal assisted bathing

**Scheme managers:** Amelia Wilshaw and Gemma Glennon

**Location:** Flat 18, 420 Abbey Hey Lane, Gorton, Manchester M18 8DU

#### Features of property:

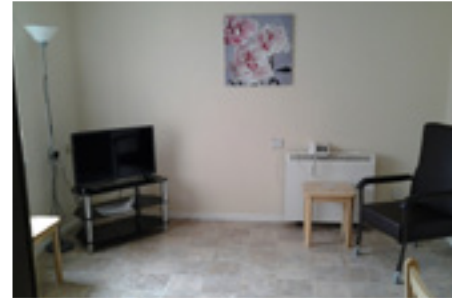
- Ground floor
- Fully furnished
- TV provided
- Kitchen includes all appliances and kitchenware
- Adapted bathroom
- One bedroom with a double bed
- Washing machine included
- Key safe and spare keys available

#### Features of the scheme:

- Dining room
- Laundry
- Guest facilities
- Garden and community centre
- Hobby room
- Activities room
- Cafe, shop, hairdressing salon
- Access to scooter facilities but will need proof of licence
- Lift access to all floors

Find out more about this property:

<https://housingcare.org/housing-care/facility-info-9442-hibiscus-court-whalley-range-england>



## Hibiscus Court (Flat 15) Whalley Range

### One-bedroom apartment

**Scheme type:** Extra Care Housing scheme with Jigsaw Homes (formerly Adactus)

**Age restriction:** 55+

#### Onsite emergency support:

Pull-cord technology connects to Control Centre for emergency help; care team do not provide double cover

#### Facilities for disabled person:

Adapted bathroom. Not suitable for wheelchairs

#### Scheme manager:

Yvonne Leacock

**Location:** Flat 15,  
16 Sedgeborough Road,  
Whalley Range, Manchester  
M16 7HU

#### Features of property:

- First floor
- Fully furnished
- TV provided
- Kitchen includes all appliances and kitchenware
- Adapted bathroom
- Single bed and bed linen
- Key safe and spare keys available
- Washing machine not included

#### Features of the scheme:

- Lift access to all floors
- Access to scooter facilities (only two spaces)
- Communal lounge
- Communal laundry
- Guest facilities
- Garden
- Large Afro-Caribbean community



Find out more about this property:

<https://housingcare.org/housing-care/facility-info-6725-tangmere-court-whalley-range-england>



## Tangmere Court (Flat 8) Whalley Range

### Two-bedroom apartment

**Scheme type:** Sheltered Housing scheme with Johnnie Johnson

**Age restriction:** 55+

#### Onsite emergency support:

Pull-cord technology connects to Control Centre for emergency help, but no onsite care team

#### Facilities for disabled person:

Adapted bathroom. Suitable for wheelchairs

#### Scheme manager:

Mark Thomas

**Location:** Flat 8, Dudley Road, Whalley Range, Manchester M16 8DF

#### Features of property:

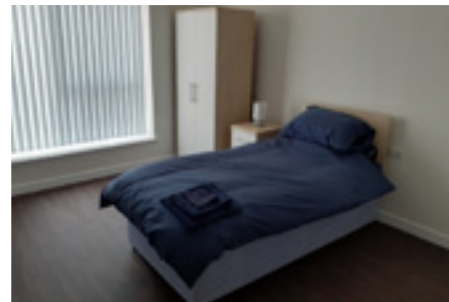
- Ground floor
- Fully furnished
- TV provided
- Kitchen includes all appliances and kitchenware
- Adapted bathroom
- Profiling bed in main bedroom and single bed in second bedroom
- Washing machine provided in apartment
- Key safe and spare keys available

#### Features of the scheme:

- Lift access to all floors
- Communal laundry
- Communal bathroom
- Guest room
- Access to scooter facilities
- Communal lounge

Find out more about this property:

<https://housingcare.org/housing-care/facility-info-161000-dahlia-house-burnage-england>



## Dahlia House (Flat 3) Burnage

### One-bedroom apartment

**Scheme type:** Extra Care Housing scheme with Southway Housing

**Age restriction:** 55+

#### Onsite emergency support:

Pull-cord technology connects to control centre for emergency help; double cover by care team onsite 24/7

#### Facilities for disabled person:

Adapted bathroom; communal assisted bathing facility; suitable for wheelchairs

#### Scheme managers:

Sasha DeMarco and Gemma Glennon

**Location:** Flat 3, Dahlia House Extra Care Scheme, 210 Burnage Lane, Manchester M19 1FL

#### Features of property:

- Ground floor
- Fully furnished
- TV provided
- Kitchen includes all appliances and kitchenware
- Adapted bathroom

- One bedroom with a single bed, but room for a profiling bed if necessary
- Key safe and spare keys

#### Features of the scheme:

- Lift access to all floors
- Access to scooter facilities but will need proof of insurance
- Communal laundry
- Communal lounge
- Garden
- Cafe

Find out more about this property:

<https://housingcare.org/housing-care/facility-info-10300-rowan-court-ladybarn-england>



## Rowan Court (Flat 10) Ladybarn

### Studio apartment

**Scheme type:** Sheltered Housing scheme with Anchor

**Age restriction:** 55+

#### Onsite emergency support:

Pull-cord technology connects to Control Centre for emergency help; care team provides double cover

#### Facilities for disabled person:

Wet room. Not suitable for wheelchairs

#### Scheme manager:

Donna Colsh

**Location:** Flat 10, Green Street, Ladybarn, Manchester M14 6TN

#### Features of property:

- Ground floor
- Studio apartment
- Fully furnished
- TV provided
- Kitchen includes all appliances and kitchenware
- Bathroom (wet room)
- Single bed and bed linen
- Key safe and spare keys available

#### Features of the scheme:

- Access to scooter storage at rear of car park
- Communal laundry facilities
- Communal bathroom with bath
- Communal lounge
- Lift access to all floors



Find out more about this property:

<https://housingcare.org/housing-care/facility-info-160999-village-135-wythenshawe-england>



## Village 135 (Flats 82,83 and 84) Wythenshawe

### Three two-bedroom apartments

**Scheme type:** Extra Care Housing scheme with Wythenshawe Community Housing Group

**Age restriction:** 55+

#### Onsite emergency support:

Pull-cord technology connects to Control Centre for emergency help. Single cover provided from 7am to 10pm via Reablement; night-time cover from 10pm to 7am by onsite care team. Double cover can be provided if capacity allows

#### Facilities for disabled person:

Wet room; wheelchair-accessible

#### Scheme manager:

Tracey Barber

**Location:** Flats 82, 83 and 84, 3 Hollyhedge Court Road, Wythenshawe, Manchester M22 4ZP

#### Features of property:

- Ground floor
- Fully furnished
- TV provided
- Kitchen includes all appliances and kitchenware
- Bathroom (wet room)
- Washing machine
- Profiling bed in main bedroom and single bed in second bedroom
- Key safe and spare keys available

#### Features of the scheme:

- Central community hub facility with a bistro, salon and spa, garden room, communal lounge and social activities
- The buildings are built on two separate adjacent sites straddling the main Hollyhedge Road. Both sites are connected via a standout feature bridge
- Lift access to all floors
- Communal laundry
- Wellbeing and bathing suite
- Access to scooter facilities

Find out more about this property:

<https://housingcare.org/housing-care/facility-info-160999-village-135-wythenshawe-england>



## Village 135 (Flats 88 and 89) Wythenshawe

### Two two-bedroom apartments

**Scheme type:** Extra Care Housing scheme with Wythenshawe Community Housing Group

**Age restriction:** 55+

#### Onsite emergency support:

Pull-cord technology connects to Control Centre for emergency help. Single cover provided from 7am to 10pm via Reablement; night-time cover from 10pm to 7am by onsite care team. Double cover can be provided if capacity allows

#### Facilities for disabled person:

Wet room. Wheelchair-accessible

**Scheme Manager:** Tracey Barber

**Location:** Flats 88 and 89, 3 Hollyhedge Court Road, Wythenshawe, Manchester M22 4ZP

#### Features of property:

- First floor
- Fully furnished
- TV provided
- Kitchen includes all appliances and kitchenware
- Bathroom (wet room)
- Washing machine
- Profiling bed in main bedroom and single bed in second bedroom
- Key safe and spare keys available

#### Features of the scheme:

- Central community hub facility with a bistro, salon and spa, garden room, communal lounge and social activities
- The buildings are built on two separate adjacent sites straddling the main Hollyhedge Road. Both sites are connected via a standout feature bridge
- Lift access to all floors
- Communal laundry
- Wellbeing and bathing suite
- Access to scooter facilities



Find out more about this property:

<https://housingcare.org/housing-care/facility-info-10298-westfields-baguley-england>



## Westfields (Flat 10) Baguley

### Studio apartment

**Scheme type:** Extra Care Housing scheme with Anchor

**Age restriction:** 55+

#### Onsite emergency support:

Pull-cord technology connects to Control Centre for emergency help; onsite care team provides double cover 24/7

#### Facilities for disabled person:

Adapted bathroom. There is also a communal shower room. Not suitable for wheelchairs

**Scheme managers:** Rebekah Shiels and Karen O'Neil

**Location:** Flat 10,  
212 Hall Lane, Baguley,  
Manchester M23 1LP

#### Features of property:

- Ground floor
- Fully furnished
- TV provided
- Kitchen includes all appliances and kitchenware
- Adapted bathroom
- Single bed and bed linen
- Key safe and spare keys

#### Features of the scheme:

- Access to scooter facilities – limited spaces
- Separate community laundry with three washers and two dryers
- Lift access to all floors
- Communal lounge





